

# Nitrates and our Manufacturing sites

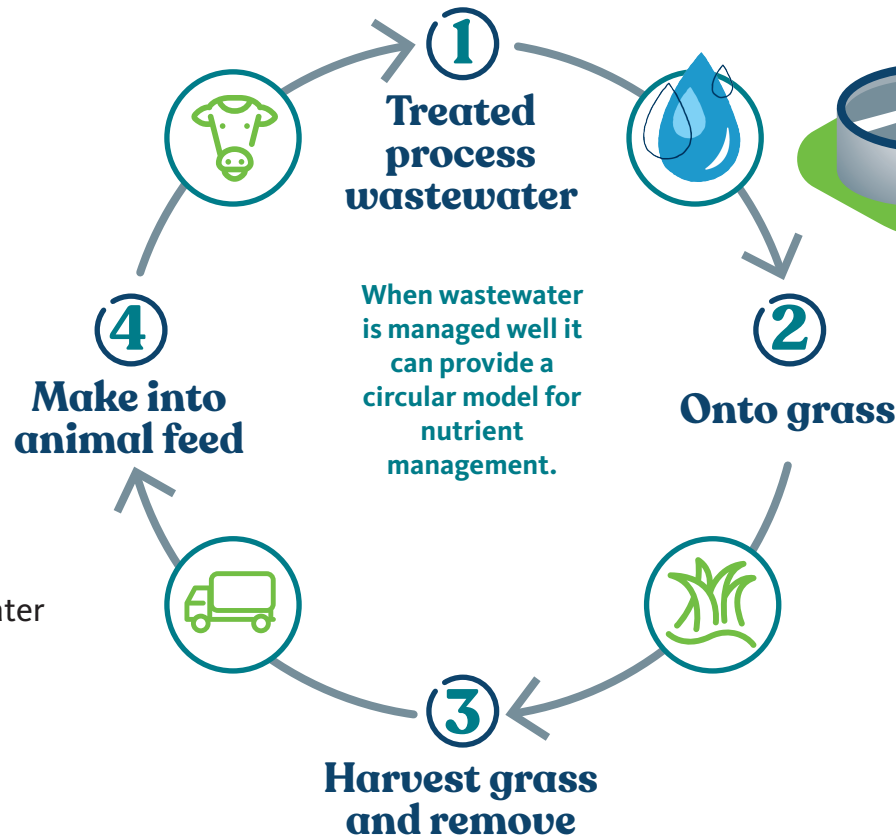
We care about the environment and communities we operate in.

## Groundwater nitrates sources

- Horticulture activities e.g. market gardens
- Septic tanks
- Farm effluent systems
- Synthetic fertilisers
- Irrigation of treated process wastewater



Groundwater is not the only source of nitrates in our diet



Drinking-water Standards for NZ is based on the WHO standard.

Max acceptable value for Nitrogen in water 11.3 mg/l

## What we're doing at Hautapu

We own three nutrient management farms

### Nitrates levels

Can be impacted from irrigation operations

### The steps we're taking:

- 1 We monitor the site to ensure it's running efficiently.
- 2 We've been investing in water saving initiatives.
- 3 Comprehensive and regular groundwater monitoring.
- 4 A new facility will allow us to reduce nitrate leaching into groundwater by 50%.
- 5 Providing filtration systems where groundwater has been impacted by our activities.
- 6 Keeping an eye on the science and potential new limits.

For more information please contact:  
[Hautapu.community@Fonterra.com](mailto:Hautapu.community@Fonterra.com)